

# The Jampensis

SEPTEMBER 2024



# *A note from our President*

Hello members,  
Another month and more grasshoppers #87. Now I truly believe someone is throwing them into my yard. I'd like to take this opportunity to acknowledge our devoted members who have been with our society for over 10+ years. One day you too can find your name on this list of the wonderful members! Please remember this is your last month to sign up for the holiday party plant.

Sincerely,  
Teri Scott  
CFOS President

## WHAT'S INSIDE...

- President Corner
- Membership
- Ribbon Winners
- Future Events
- AOS Corner / Orchid Culture

## *Upcoming meetings @ Leu Gardens 7 pm*

### **October's General Meeting**

Monday October 14th at  
7:00pm Leu Gardens

Our Speaker is  
Phillip Hamilton  
Bredren Orchids

Topic: Novelty Phalaenopsis



**Culture Group Meeting** - Thursday October 3 - The Culture Group has monthly topic discussions or workshops on orchid culture and anything from repotting to seasonal care. Open plant discussions address problems and questions answered. If you're not a member yet & you'd like to join, \$10 annually per member. Pay cash at the Thursday night meeting.

# Membership

**Tenure 10+ 15+ 20+ years**  
**Thank you all for your**  
**dedication to CFOS**

10+

Nancy Balderson  
Brian Behm  
Jeanne Brenan  
Alida Eldridge  
Edward Eldridge  
Lori Erlacher  
Pat Fusco  
Daniel Iskanyn  
Cari Johnson  
Roger Mabini  
Mickey O'Brien  
Larry Rosen  
Teri Scott

15+

Mike Cimato  
Alicia Lang  
Neil Lang  
Ron McHatton  
Tsuruko Moenckmeier  
Robert Molpus  
Kent Nauman  
Joselito P. Tolentino, Jr.

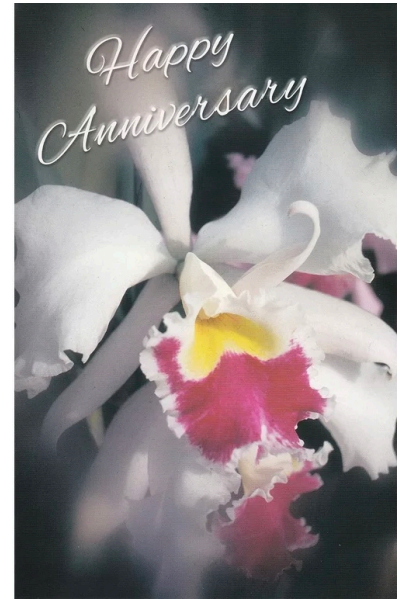
20+

Maren Aleman  
Rodney Atkinson  
Kathi Clifford  
Marge Fantozzi  
Connie Fox  
Irvin Fox  
John Hicks  
Nancy Hoffman  
Ralph Huber  
Georgeanne Lewis  
Pam Marion  
Arundhati Sarvotham  
Gretchen Schitter  
Frank Smith  
Jerry Steele  
Douglas Watson  
Colleen Wold  
Robert (Rong-Tsai) Wu  
Mary Zubrod-Pinkman

# Membership



Debbie Beckman  
Penny Bullard  
Maria Campos  
Kim Dellaca-Badger  
Fran Dworkin  
Christine Hammond  
Dakota Hunter  
Julia Jensen  
Deborah Johnson  
Neil Lang  
Carol Lauer  
Vivian Luscuskie  
Sandra Manzi  
Pam Marion  
Lisa Millar  
Arnis Robeznieks  
Linda Scherer  
James Shepard  
Patricia Smith  
Maki Young



Gabriella Scherer  
Karan Stevens  
Douglas Watson

# September Winners!!!



Blc. Grezaffis Blue Shawn  
grown by Joyce Gibault



Brassavola nadosa  
grown by Terry Drayer



Eyv. Hamlyn's Tallawah  
grown by Sam Starr



Phal. Mia Ho Summer Love  
grown by Maren Aleman



Rlc. Love Triangle grown by  
Kieth & Dina Emig



Paph & Phrags Gualaceo  
grown by Terry Drayer



Den. Blue Happiness  
grown by Sam Starr



Aeries Rubsomi Gem  
grown by Sam Starr



Zygo Triste grown by  
Teri Scott



Onc. Crimson Pride  
grown by Teri Scott

# Upcoming Events

## Holiday Party

November 11th 7p - 9p  
The Camilia room Leu Gardens  
You're invited - please RSVP

Sign up and let us know your choice of orchid  
Oncidium, Dendrobium, Cattleya, Vanda or Phalaenopsis

Save the Date

**SPOOKTACULAR**

Orlando  
Sorry EVENT CANCELLED  
nt  
le

October 25~26~27

Sponsored by  
Central Florida Orchid Society

Florida National Armory  
2809 S Ferncreek Ave  
Orlando, FL

## Tamiami International Orchid Festival



### ORCHID EXHIBITS

Local orchid societies and vendors create beautiful exhibits full of exotic and rare orchids in artistic arrangements.



### go VENDORS

Ninety national and international orchid growers and allied product vendors come together under one roof to offer an amazing assortment of exotic orchids and orchid-related products.



### FREE ORCHID LECTURES

Attend lectures on growing orchids, controlling pests and diseases, history and culture of orchids, and more! All free with your paid admission to the Orchid Festival.

**We are looking to see if there is enough interest to charter a bus**

The Tamiami bus trip price per individual would be \$62.00 if we can get 56 sign ups and \$84.00 if we can only get 40 sign ups. The entrance fee for the festival is \$15.00, but society members on the bus get free admission. We are looking at Saturday January 18th, the bus would leave a designated spot at 7am and return at 8pm.

**If interested please respond to Teri Scott @ [teriscottfla57@aol.com](mailto:teriscottfla57@aol.com)**

# Upcoming Events

**JOIN US IN AOPKA • NOVEMBER 1 - 3, 2024**

**OPEN TO EVERYONE • FREE ADMISSION AND PARKING!**

The Apopka International

*Fall Orchid Festival*

In Conjunction with  
The International  
Phalaenopsis Alliance  
Symposium

Sponsored and Hosted by  
**Krull-Smith**

**Location: Krull-Smith Nursery**  
2800 W Ponkan Rd • Apopka, FL 32712  
Tel: (407) 886-4134 • orchids@krullsmith.com • www.krullsmith.com

*Orlando international orchids show and sale*

November 1-3  
2024

9 am to 5 pm

International vendors  
Florida vendors  
Hawaiian vendors

Free Admission  
Free Parking

**Location: Orchids in Bloom**  
2001 rock spring rd  
Apopka FL 32712  
407-242-0619

Sponsored by  
Orchid in Bloom

Central Florida Orchid Society  
Presents the



**2nd Annual  
Jean & Ed Gilliland  
Memorial Show**

**& One Day Sale**  
November 16th 10am - 3pm

**Sponsored by and located at  
Commerce Bank & Trust**  
1201 S. Orlando Ave, Winter Park 32789

Watch for volunteer sign-up sheets during the meetings!! Volunteer Opportunities:

**Krull-Smith** - Fri, Sat, Sun  
1st Shift 9-1pm, 2nd Shift 1-5pm  
2 volunteers per shift per day

\***Orchids In Bloom** - Fri, Sat, Sun  
1st Shift 9-1pm, 2nd Shift 1-5pm  
1 walking volunteer per shift, per day

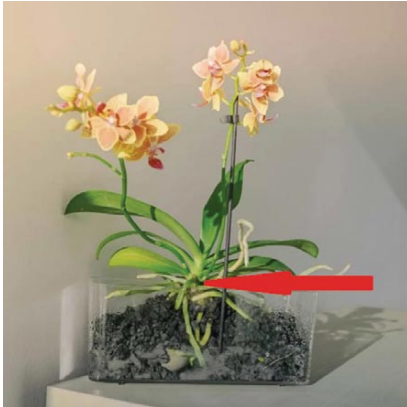
\***Bank Show** - Sat 10-3pm, 1-3 volunteers

\*Volunteers walk around talking to patrons with culture sheets, society detail flyers, discuss other available resources

Can also email volunteer requests to  
NJB.123@me.com

## QUESTIONS AND ANSWERS

### AERIAL ROOTS



#### QUESTION

What do I do with the aerial roots when I repot my phalaenopsis. When I repot my cattleyas do I bury the aerial roots in the potting medium? Should excessively long aerial roots be cut back?

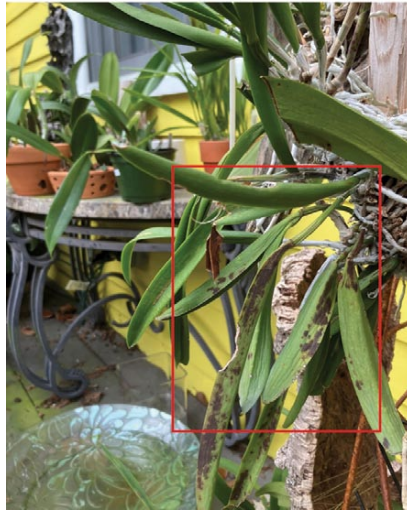
#### ANSWER

Orchid roots develop specifically for the environment in which they are produced which means if aerial roots cannot be maintained as aerial roots, then cut them back. The worst thing you can do with aerial roots is bury them in the bottom of a pot, covered with potting mix. Roots produced in open air have a different velamen structure than roots that develop in potting mix and do not adapt well to being covered. Roots that develop in sphagnum moss are structurally different from those produced in a more open bark-based mix and this is the reason why moving from one medium to another has to be done gradually to avoid loss of the entire (or nearly) root system. For phalaenopsis, if you can leave aerial roots as aerial roots, fine, do that. If you were to repot this plant, I would put mix up to the base of the lowest leaf (arrow) and leave the white aerial roots outside the mix. If you must bury them, trim them off so that they are not crammed into the bottom of the pot. You can cut phalaenopsis roots so that they are only about 4 inches (10 cm) long, put them in a pot, and they will fairly quickly branch and replace what you cut off. The same considerations are true for cattleyas as well.

### BROWN SPOTS

#### QUESTION

What are these brown marks on this



orchid? They seem to be affecting the oldest growth. Is this sunburn? I treat my plants with a dilute banrot mixture.

#### ANSWER

Banrot is a good broad-spectrum fungicide (the same active ingredient in Thiomyl and Clearys 3336). This may be sunburn or caused by heat stress from the combination of bright sunlight and high summer temperatures. If you look at these marks, they are all on a single plane. It has not affected any of the upper leaves or ones facing in different directions. Also, note the marked leaves are desiccated with multiple wrinkles. I suspect this is the natural tendency of the plant to move what water it has into the front portion of the plant to benefit the new growths. When that happens the older growths prematurely shut down, and the leaves will be shed. I would increase watering frequency, reduce light levels, and increase the air movement and humidity to help alleviate possible heat stress.

#### VIRUS?



#### QUESTION

What is causing this problem that is spreading to all my orchids? They have never been exposed to direct sun or cold weather. I have sprayed with different things, fungicides, and miticides, and am about to try hydrogen peroxide. Help!

#### ANSWER

There are a couple of potential causes of damage like this and you cannot rule out a viral infection although at this point, testing for Phalaenopsis Chlorotic Spot Virus (PCSV) is not readily available and tests for the usual viruses, Cymbidium Mosaic and Odontoglossum Ringspot do

These questions were part of one or more monthly webinar Q&As and compiled by Larry Sexton for inclusion here. Each month, a Q&A webinar is held during the first two weeks of the month. To view recorded Greenhouse Chats (Q&A webinars) or register for a future one, see <https://www.aos.org/orchids/webinars.aspx>. Send questions to [greenhousechat@aos.org](mailto:greenhousechat@aos.org) — Ron McHatton, AOS Chief Education and Science Officer.



not detect it and it is a common virus among mass market phalaenopsis. The other typical cause is a phalaenopsis mite infestation. Phalaenopsis mites preferentially damage mature leaves so if newly developing leaves start undamaged and get progressively worse as they mature, it would be consistent with mites. These mites are very hard to detect because they are tiny, almost translucent, and they do not move very much unlike spider mites that spin those characteristic webs you cannot miss. You could treat them as if they are carrying a viral infection (isolated and care taken not to transmit the virus to other plants) while you treat them with a miticide such as Avid or Akari. Avid is effective against all stages of the mites in question but does not affect the eggs. Akari is also effective against eggs. Avid has a residual effect that lasts for 28 days and Akari for 21. When applying pesticides, you should add a wetting agent or, at a minimum, a drop or two of dishwashing liquid to help break the surface tension of the waxy leaves and the mites. Avid is a translaminar systemic so it is less critical to get all parts of the plant than it is for Akari. If the problem continues or continues to spread, it is most likely PCSV and incurable. Also, a note about phalaenopsis mites. Phalaenopsis mites are known to spread PCSV so controlling mite infestations is good insurance.

YELLOW PATCHES



UPCOMING MEMBER SURVEY

In October, two lucky AOS members will win a 2-year Gold extension to their membership. Be on the lookout for the 2024 AOS Member Survey in October. Tell us what we can do for you. When you fill out the survey, you will help us serve you better, and you will have a chance to win a 2-year membership.

QUESTION

On an otherwise healthy oncidium, I have two leaves with yellow patches. I have found no insects on the underside of the leaves. Is this cause for concern?

ANSWER

These spots remind me of the damage you see early on from young scale insects. These tiny crawlers are so small they are easily missed and the usual sign of their presence is the formation of yellow dots or patches noticeable from the upper leaf surfaces. If that is what is causing these blotches, the scale will fairly quickly

grow to sufficient size to be seen on the undersides. Without the application of pesticides, you can wash the leaves with soapy water and a damp cloth applying enough pressure to remove the crawlers.

It is also possible that this is the early stage of a leaf-spotting fungal infection so treating the plants with a broad-spectrum fungicide such as banrot, Thiomyl, Clearys 3336, or Soluble Copper (the advantage of Soluble Copper is that copper functions as a bactericide as well) could be beneficial as well.

Webinars - Coming Attractions!

REGISTRATION IS EASY [www.aos.org/webinars](http://www.aos.org/webinars)

Cannot make it on the scheduled date and time? No need to worry.

Register now and view on your time schedule.

Send Your Greenhouse Chat Questions and Photos to: [greenhousechat@aos.org](mailto:greenhousechat@aos.org)

Greenhouse Chat webinars are recorded and indexed by topic for future viewing.

<b>When</b>	Sept.05, 2024 Thursday 8:30 pm EDT	Sept.10, 2024 Tuesday 8:30 pm EDT	<b>At Your Leisure</b> <b>Orchids for Everyone</b> <i>Master Gardener Series</i> <b>Ready-to-Watch</b>
<b>Topic</b>	<b>Greenhouse Chat</b> <b>Orchid Q &amp; A</b> <i>Send in your Photos and Questions by Sept. 03</i>	<i>Master Gardener Series</i> <b>New &amp; Novel</b> <b>Hybrids at</b> <b>Longwood Gardens</b> and How to Grow Them	<b>Intro to Orchids</b> <b>How to Identify Orchids</b> <b>How to Divide, Repot, Mount</b> <b>General Orchid Care</b> <b>Pests and Diseases</b> <b>Native Orchids of PA</b>
<b>Presenter</b>	<b>Ron McHatton</b> Chief Education and Science Officer	<b>Greg Griffis</b> Horticulture <b>Specialty Grower</b> Longwood Gardens	<b>Russ Vernon, Bob Sprague, Jay</b> <b>Balchan, Dr. Ron McHatton,</b> <b>Barb Schmidt, Janeil Payne and</b> <b>David Vandenbroek</b>



Webinar announcements are posted to Facebook, Instagram and in the AOS Corner of your Affiliated Society's newsletter.

Use the  
WEBINAR  
Display  
Filter

## Newly Released AOS/Master Gardener Webinars

THE AOS EDUCATION Committee is proud to present the “Orchids for Everyone” webinar series. This is a 6–class master series produced in the fall of 2023 in conjunction with the Pennsylvania Master Gardener’s Program. These six classes include:

- “Introduction to Orchids” by Barb Schmidt
- “The Most Popular Orchids and How to Identify Them” by Janeil Payne and David Vandebroek
- “How to Repot, Divide, and Mount Orchids” by Jay Balchan and Eron Borne
- “General Orchid Care” by Russ Vernon
- “Pests, Diseases, and Troubleshooting Problems” by Ron McHatton
- “Pennsylvania and Mid–Atlantic Native Orchids” by Bob Sprague

The Master Gardener webinars have been uploaded to the AOS website and are now available for your viewing pleasure as one of your complimentary AOS member benefits! — *Barb Schmidt, AOS Education Committee Chair (email jentomsch@hotmail.com).*



*You can visit The Central Florida Orchid Society on the web where you can get information about upcoming events, see who next month's speaker is, read about our society's history, find some great resource links for care of your orchids, and pay your dues.*

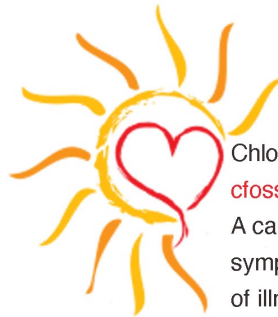
*Check us out at <https://cflorchidsociety.org>*



Like the "Central Florida Orchid Society group" on Facebook. We post details about all of our events, meetings and shows. There is an amazing collection of pictures of our orchids from previous events and judgments, as well as an open forum for questions and discussion.

Click on the link below and join in on the fun!!

<https://www.facebook.com/groups/cflorchidsociety>



## *The Sunshine Girls*

Chloe' and Jana have set up an email address, [cfossunshine@gmail.com](mailto:cfossunshine@gmail.com) for members to send their card requests to. A card request can be for any reason, to express congratulations, sympathy or concern to members of the society in the event of illness, bereavement or milestone events.

### **Leadership**

Teri Scott - President

Jeanne Blankenship - Vice President

Jeanne Brenan - Corresponding Secretary

Juan Carlos Bianchi - Recording Secretary

Nancy Balderson - Treasurer

Sheila Coburn - Membership

Lori Erlacher - Past President

Dabra Huneycutt - Newsletter Editor

### **Board of Directors**

**Samantha Starr, Althea Montgomery, Jane Poché, Denise Andreu**