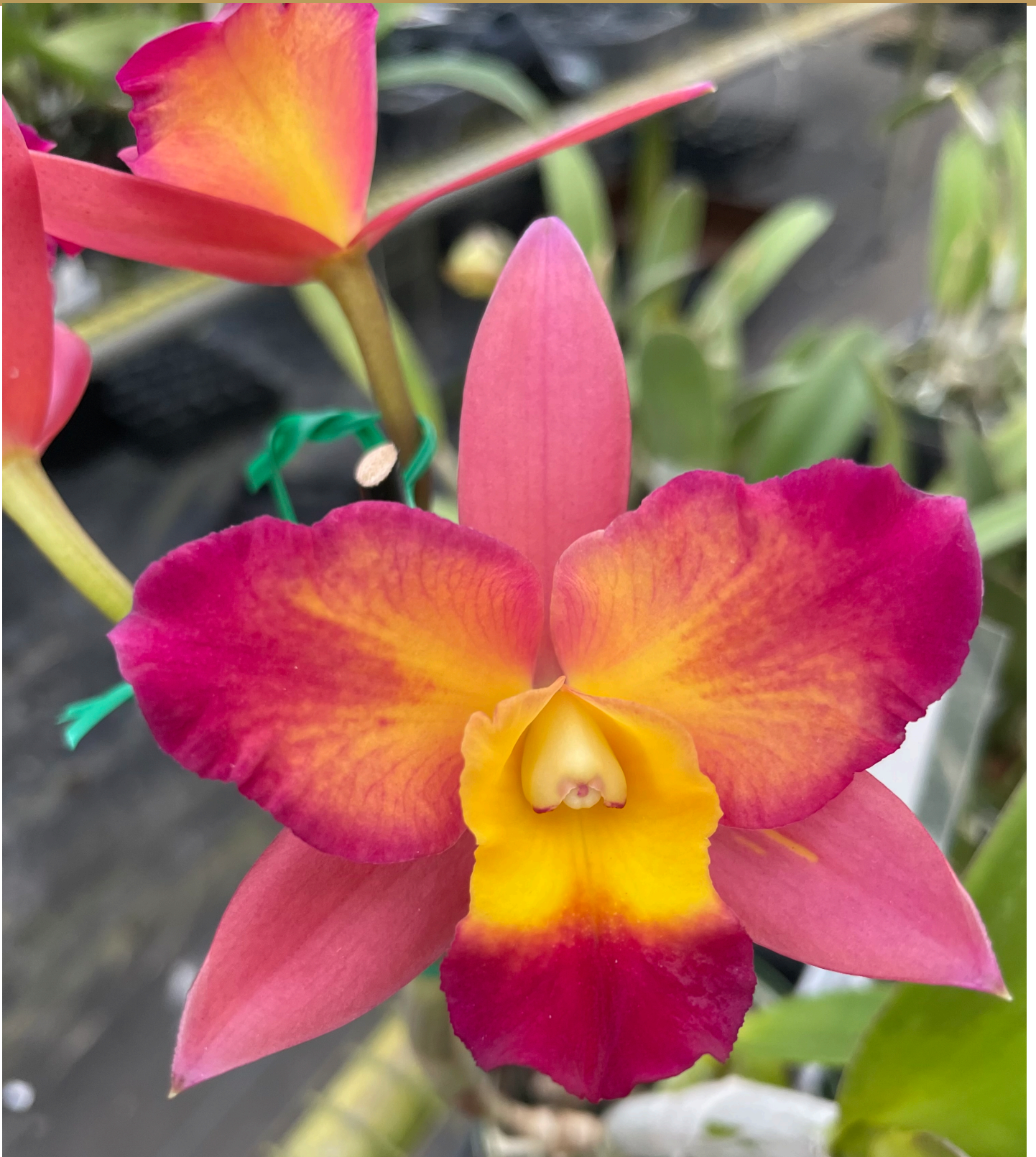


JANUARY 2025

The Tampensis



A note from our President

Hello members,

I had a wonderful time at the Krull-Smith and Orchids in Bloom shows! So glad they are few and far between, I have only so much room. Thank you members who volunteered to represent our society. We had several people sign up, and many more who will attend February's meeting.

Remember February's theme is **VALENTINE** so put your heart on and win an orchid. Support our society, plant sales are from a private collection (Georgeanne Lewis) and priced to sell, so bring your \$\$\$.

Sincerely,
Teri Scott

WHAT'S INSIDE...

- President Corner
- Membership
- Ribbon Winners
- Future Events
- AOS Corner / Orchid Culture

Upcoming meetings @ Leu Gardens



February's General Meeting

February 10th @ 6:30 – 9:00pm

Camilia Room Lue Gardens main building

Speaker: Ron McHatton, AOS Director of Education

Got Questions? As always a very informative Q&A session

Culture Group Meeting - Thursday, Feb. 6 @ 7 pm - The Culture Group has monthly topic discussions or workshops on orchid culture and anything from repotting to seasonal care. Open plant discussions address problems and questions answered. If you're not a member yet & you'd like to join, \$10 annually per member. Pay cash at the Thursday night meeting.

Membership

WELCOME NEW MEMBERS !!

Clinton Anderson
Blaine Barnhill
Melissa Byrd
Carlos Campos
Maria Campos
Vincent Gomez
Shelly Gruszynski
Melissa Gugliano
Raul Izquierdo
Rafael Laurentin
ShireeNichols
Piedad Paredes
V Elaine Richards
Scott Sinemus
Susan Squires
Victoria Walter

JANUARY BIRTHDAYS

Debbie Brown
Prashant Chopde
Edward Eldridge
Cheryl Felthousen
Pat Fusco
Shelly Gruszynski
Nancy Hoffman
Ralph Huber
Roger Mabini
Miriam McClellan
Theresa Neary
Jerri Paterson
Jojo Patino
Gabriella Scherer
Frank Smith
Karan Steven's
Hester Velez
Robert (Ring-Thai) Wu



January Ribbon Winners



Rhy. gigantea grown
by Daniel Iskanyn



V. Somsri Glory Blue
grown by Sandy Doyle



Bulb. arfakianum
grown by Jana
Evans



Burr. Mayor Billy
'JF069' grown by
Teri Scott



Phalenopsis grown
by Sue Hartner



Prra. Suwannaphum
Sunshine grown by
Joyce Gibault



Rth. Fuchs Orange
Nugget 'Lea' grown
by Jerry Steele &
Adrian Demetree



C. lueddemannia
var. coerulea
grown by Jerry
Steele and Adrian
Demetree



Den. sanderae var.
luzonicum grown
by



Ric. Drew Simon
Snuth 'Krull Smith'
grown by Jerry
Steele & Adrian
Demetree



Den. phalenopsis grown
by Vivian Luscuskie

Upcoming Events

Repotting Clinic & Orchid Sale



**Saturday
March 29th
10am - 4pm**

Repotting demonstrations
Bring a plant in for repotting

see our website for more details

**Sponsored by and located at
Commerce Bank & Trust
1201 S. Orlando Ave, Winter Park 32789**

Central Florida Orchid Society's
67th Annual Show & Sale



Bewitched by Orchids

**Save the Date
June 6, 7 & 8th**

**Florida National Armory
2809 S Ferncreek Ave, Orlando**



Thank You !!

BIG
Thank You!

To those who volunteered at our membership tables last weekend.

You did great
We have 5 new members to welcome
and
we made \$396.00 on the raffles.



A big
Thank you
to those who donated

Kathy Clifford
Jerry Steele
Joyce Gibault
Alvin Chambers
Georganne Lewis



Plant preview for our upcoming plant sale at Monday's meeting and March 15th Sale

Den. Hawaii Spectacular



Tetratonia Dark Prince



Vanda 'Usha' -

Vanda Josephine va Brero x Vanda Doctor Anek,



Pda. Tamiami Blues

(Vanda Erika Cizek Dann 'FLSO Blue Smoke' x Ascda. Marge Howard 'Florida SunCoast') AM/CCM/AOS



Rhynchodenia Magic Wand Blue



Vanda Doctor Leopard



Brassocathante Jairak Finch



Yam. Redland Sunset.



V Sanderana x V Taweeksu



QUESTIONS AND ANSWERS

CLEARY 3336F



QUESTION

Am I supposed to submerge the plant, leaves, and everything else when I do a drench? If I am to submerge it, do I rinse the leaves off afterward? My notes say to drench it every three weeks. Is that correct? Can I cover and reuse the mixture later?

ANSWER

I am not a fan of dunking plants because using the same bucket from plant to plant runs the risk of spreading the disease to plants that aren't infected. You are better off not submerging the plant but spraying the entire plant, leaves and pseudobulbs, and into the potting mix until it comes out the drainage holes. You want to make sure that you thoroughly apply the fungicide to the pot and that you get all leaf surfaces.

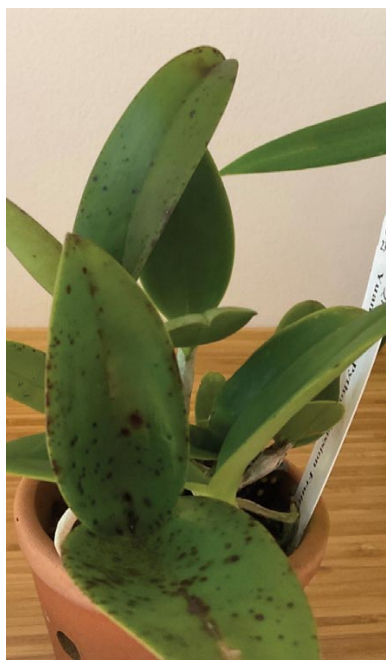
Do not rinse the leaves after treatment. Cleary 3336F (also known as thiophanate methyl and ThiomyI) is a systemic fungicide taken up by the roots and the foliage, and works its magic from the inside out. It will leave a fine residue on the leaves that helps to prevent additional spores on the leaf surfaces from germinating and the longer the material is in contact with plant tissue, the more the uptake will be.

One application is rarely sufficient, especially if you are fighting an existing infection. You will get much better control

with several applications. I would use a two-to-three-week interval until you know your infection is under control.

I would not recommend keeping the diluted material for more than a short time (couple of weeks perhaps). Once the fungicide is mixed with water it will start to slowly decompose and that rate depends on temperature and light exposure. You really only know the concentration of active ingredient at the point you made up the solution. Mix a minimum amount so there is little to nothing left over and dispose of any excess by spraying your lawn (the active ingredient is a common lawn fungicide) or outdoor plants. If you have a small collection of plants or only a limited number infected, ThiomyI is available in 1 pound (0.45 kg) containers instead of 25 pound (11.4 kg) bags.

CATTLEYA LEAF PROBLEM



QUESTION

These black spots have developed on my cattleya leaves. The plant is grown under lights. This past winter, the humidity was low, and I tried to spray my plants often. What do you think is causing this?

ANSWER

These look like bacterial leaf spots. Bacterial leaf spots (not bacterial brown spot disease) tend to create black pits

with little to no dying tissue around them (those yellow rings you often see in fungal diseases). These spots are usually a sign that something in the environment isn't right — too little air movement, too hot or cold, etc. Spraying can foster these if the leaves remain wet for long periods of time but you would have seen the problem develop during the time you were misting and not much later.

I would check my humidity and increase air movement. Humidity trays and cool mist humidifiers are better options than misting and you could even use one of those foggers the vivarium people use. Even something as simple as a cloth towel dipped into a container of water with a fan blowing over the damp cloth will raise nearby humidity.

As long as you are not treating dendrobiums, a copper fungicide, Liquid Copper, one of the Phyton products, Champ or Kocide could be useful to control the spotting but copper can be lethal on dendrobiums.

ERWINIA



QUESTION

The tip of this affected leaf started to turn brown and slowly advanced toward the stem. The base of the fan now seems infected. I grow under lights in tree fern fiber. The plant is allowed to dry slightly between watering. Any advice?

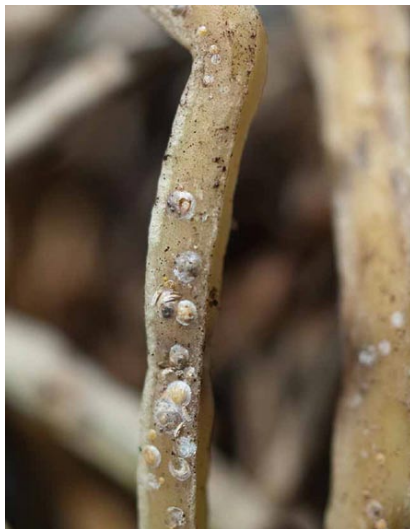
ANSWER

I think this is a bacterial disease called Erwinia (technically a member of the genus *Pectobacterium* but most people know it as Erwinia). It is common in phragmipediums, paphiopedilums and mexipediums. It is virtually always an indication that something is wrong in the root zone; too wet, too dry,

QUESTIONS AND ANSWERS

potting medium getting old and the pH beginning to shift, fertilizer concentration is too high or the potting mix is not being leached sufficiently. The disease can start anywhere although it most often starts at the base or tip of the leaf. As the disease progresses, the damage works its way down the leaf (or up from the base) until the entire leaf dies and another leaf begins to show signs of infection. If caught early enough, the plant can be saved but the critical aspect is figuring out what is wrong in the first place. I would check water hardness, fertilizer concentration, how often you fertilize, or is the plant getting overly dry between waterings. If plants are not leached sufficiently, fertilizer salts build up in the potting mix and often will appear as a white crusty substance around the pot edge and the drainage holes.

ISOLATING PLANTS



One of the compelling reasons for isolation of new acquisitions is to minimize the potential introduction of scale and mealybugs. This is the root of a phalaenopsis that had no outward signs of a scale infestation visible above the potting mix surface.

QUESTION

Our society is grappling with the problems of bringing new purchases that may be buggy or virused into our collections. Many of us grow on windowsills, garden windows, tabletops, and some grow in outdoor lathhouses. How do you recommend we isolate plants for pests given our limited growing spaces? Also, how long should we isolate for?

ANSWER

Isolation of new plants is really part

of a two-pronged approach. The other prong is carefully watching them for problems. It is not necessary to keep new plants in a totally removed area if they are watched. All you need to do is make sure that they are being monitored well enough to intercept a problem before it spreads. I recently toured a large growing area where virused plants were isolated on a separate bench in the same house. If flying insects such as thrips that can spread viruses are kept out of the growing area, there is every reason to believe that minimal distance is required. Although scale and mealybugs do spread, it is slow enough that you should see them first. This means that keeping new plants on a separate bench (or part of a bench with a bit of distance between the new plants and the rest of the bench is kept open) in a greenhouse or lathhouse or leaving completely empty space separating new plants from an existing collection on a light cart or windowsill should be fine. You just do not want leaves touching or water splashing from plant to plant (many fungal and bacterial problems as well as Odontoglossom Ring Spot and Cymbidium Mosaic Viruses stay viable for a long time, and are easily transmitted).

As for how long, this is a tough

question. It can take weeks to months for scale or mealybugs to make their presence known but I would think four to six weeks with diligent observation ought to be long enough to catch the majority of issues. Keep in mind that nothing is perfect and we just try to catch as much as we can.

The other option is to assume anything new could have insects and make a habit of treating new plants with an insecticide and then watching them diligently. When my shadehouse was not as overcrowded as it is now, isolation was fairly easy. Lately, I have taken the second approach. New plants are treated immediately with either Orthene (Orthene has a terrible odor so you cannot use it inside) or an imidacloprid product and then again about a week later. This should get rid of 98+% of any insects present. After those two weeks, the plants will get a regular application of an insect growth regulator when the entire shadehouse is treated.

Webinars - Coming Attractions!

REGISTRATION IS EASY www.aos.org/webinars

Cannot make it on the scheduled date and time? No need to worry.
Register now and view on your time schedule.

Send Your Greenhouse Chat Questions and Photos to: greenhousechat@aos.org
Greenhouse Chat webinars are recorded and indexed by topic for future viewing.

When	Jan. 02, 2025 Thursday 8:30 pm EST	Jan. 09, 2025 Thursday 8:30 pm EST	Feb. 05, 2025 Wednesday 8:30 pm EST	Feb. 12, 2025 Wednesday 8:30 pm EST
Topic	Greenhouse Chat Orchid Q & A <i>Send in your Photos and Questions by Dec. 31, 2024</i>	Inorganic Potting Media, Never Repot Again Part 1 Semi-hydroponic growing	Greenhouse Chat Orchid Q & A <i>Send in your Photos and Questions by Feb. 03</i>	Inorganic Potting Media, Never Repot Again Part 2
Presenter	Ron McHatton AOS Chief Education and Science Officer	Harvey Brenneise Long time orchid grower across multiple states and in different environments.	Ron McHatton AOS Chief Education and Science Officer	Harvey Brenneise Long time orchid grower across multiple states and in different environments.

Webinar announcements are posted to Facebook, Instagram
and in the AOS Corner of your Affiliated Society's newsletter.

Use the
WEBINAR
Display
Filter



You can visit The Central Florida Orchid Society on the web where you can get information about upcoming events, see who next month's speaker is, read about our society's history, find some great resource links for care of your orchids, and pay your dues.

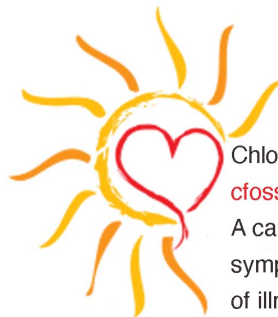
Check us out at <https://cflorchidsociety.org>



Like the "Central Florida Orchid Society group" on Facebook. We post details about all of our events, meetings and shows. There is an amazing collection of pictures of our orchids from previous events and judgings, as well as an open forum for questions and discussion.

Click on the link below and join in on the fun!!

<https://www.facebook.com/groups/cflorchidsociety>



The Sunshine Girls

Chloe' and Jana have set up an email address, cfossunshine@gmail.com for members to send their card requests to. A card request can be for any reason, to express congratulations, sympathy or concern to members of the society in the event of illness, bereavement or milestone events.

Leadership

Teri Scott - President

Jeanne Blankenship - Vice President

Jeanne Brenan - Corresponding Secretary

Juan Carlos Bianchi - Recording Secretary

Nancy Balderson - Treasurer

Sheila Coburn - Membership

Lori Erlacher - Past President

Dabra Huneycutt - Newsletter Editor

Board of Directors

Althea Montgomery, Jane Poché, Denise Andreu, Maren Aleman